



Contenitori industriali autoportanti IP40 da parete RAL7035 per tubo
IP40 indust. wall mounted enclosures for duct - self-supporting - RAL7035

	Cod. Code	Descrizione Description	Info	€	<input type="checkbox"/>	<input type="checkbox"/>
	45Q41	1 modulo <i>1 module</i>		24	24	
	45Q42	2 moduli <i>2 modules</i>		24	24	
	45Q43	3 moduli <i>3 modules</i>		20	20	
	45Q44	4 moduli <i>4 modules</i>		20	20	
	45Q44V	4 (2+2) moduli - installazione verticale <i>4 (2+2) modules - vertical installation</i>		20	20	
	45Q46	6 moduli <i>6 modules</i>		1	10	
	45Q480R	8 (4+4) moduli - installazione orizzontale <i>8 (4+4) modules - horizontal installation</i>		1	6	
	45Q4120R	12 (4+4+4) moduli - installazione orizzontale <i>12 (4+4+4) modules - horizontal installation</i>		1	18	
	45ST99	Scatola di derivazione da parete <i>Wall mounted junction box</i>		1	20	

45Q41

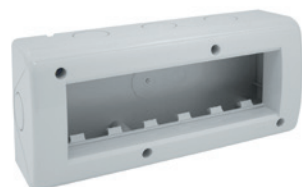
45Q42



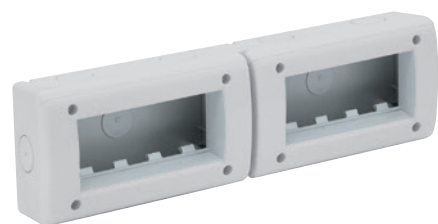
45Q43



45Q44



45Q46



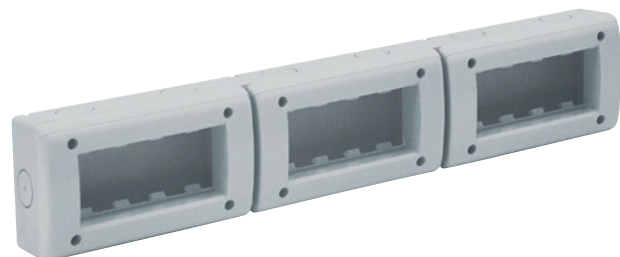
45Q480R



45Q44V



45ST99



45Q4120R

Le dimensioni, salvo diversamente specificato, sono in mm
 Dimensions, except where otherwise specified, are in mm

Prodotto per scatola quadrata
 Product for British Standard square box only

Prodotto 1 modulo installabile in scatola tonda con altro prodotto 1 modulo
 1 module product installable in round box with another 1 module device

Imballo Minimo pcs
 Min. Packaging pcs

Imballo Standard pcs
 Std. Packaging pcs

