



Serie Domus - TEKLA - Class

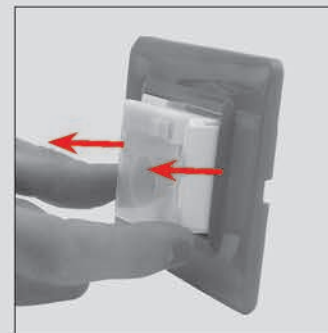
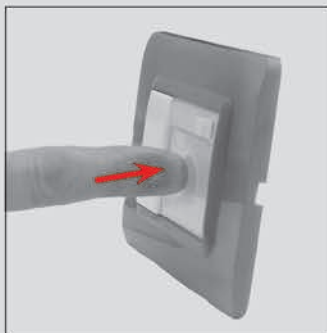
Domus - TEKLA - Class series

Lampade
Lights



140

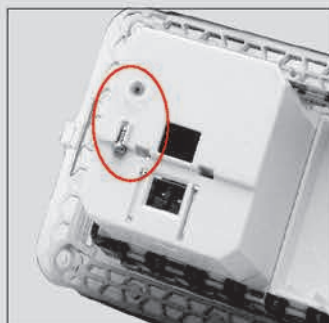
Lampade estraibili 44..086 Removable lights 44..086



Estrazione lampada: premere sul fronte
Light removal: push on the front



Gancio appendi-lampada
Light clipping hook



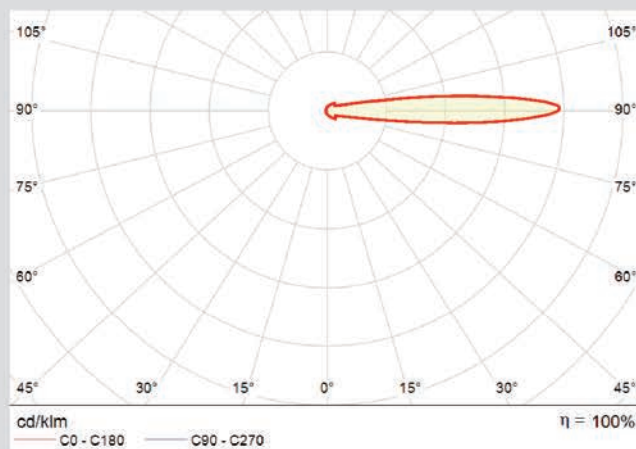
Vite per blocco estrazione lampada
Light anti-removal screw



Sostituzione batteria
Battery replacement

Lampada di emergenza MULTICOMPATIBILE MULTI-COMPATIBLE emergency light

Installazione su scatole standard da 4 e 7 moduli
Installation on 4 modules and 7 modules standard boxes



- Flusso luminoso 90 lumen
- Completa di supporto MULTICOMPATIBILE 6/7 moduli
- Installabile sia in scatole da incasso standard 6/7 moduli sia in scatole 4 moduli
- Da completare con placche standard 7 moduli S44 di Ave o con analoghe placche di altri costruttori (Bticino Livinglight, Bticino Living International, Bticino Light, Vimar Eikon, Vimar Plana)

- Luminous flux 90 lumen
- Supplied with MULTICOMPATIBLE 6/7 modules frame
- It can be installed both in 6/7 modules standard flush mounted boxes and in 4 modules boxes
- To be completed with AVE S44, 7 mod front plates or with similar front plates by other manufacturers (Bticino Livinglight, Bticino Living International, Bticino Light, Vimar Eikon, Vimar Plana)



Per la disponibilità contattare la rete commerciale
For availability please contact sales dept.



Disponibilità fino ad esaurimento scorte
Available until stock out



Prodotto per scatola rettangolare inglese
Product for British standard rectangular box



Prodotto per Export
For Export only

Caratteristiche Tecniche Technical Features