

DomusAir - Ventilazione residenziale

DomusAir - Residential ventilation

Sistema di distribuzione aria per VMC canalizzata

Air distribution system for centralised CMV

650

Descrizione Description

Info

€

□

□



VNXI80BRD VNXI125BRD
VNXI100BRD VNXI150BRD

VNXI80BRD
Bocchetta Design di estrazione/immissione regolabile Ø80mm, per attacco a condotto cod. VNXI63CNDF
Design adjustable grille, for extract and intake Ø80mm, for duct code VNXI63CNDF.

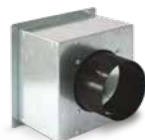
1 1



VNXI63PML/140L

VNXI100BRD
Bocchetta Design di estrazione/immissione regolabile Ø100mm, per Plenum codd. VNXI63PML/140L-VNXI63PM/140L
Design adjustable grille, for extract and intake Ø100mm, for plenum codd. VNXI63PML/140L-VNXI63PM/140L.

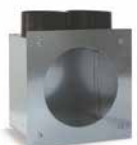
1 1



VNXI63PM/140L

VNXI125BRD
Bocchetta Design di estrazione/immissione regolabile Ø125mm, per attacco a condotto cod. VNXE125CNDF
Design adjustable grille, for extract and intake Ø125mm, for duct code VNXE125CNDF.

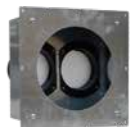
1 1



VNXI63PML/200L

VNXI150BRD
Bocchetta Design di estrazione/immissione regolabile Ø150mm, per plenum codd. VNXI63PML/200L-VNXI63PM/200L
Design adjustable grille, for extract and intake Ø150mm, for plenum codd. VNXI63PML/200L-VNXI63PM/200L.

1 1



VNXI63PM/140L

VNXI63PML/140L
Plenum in lamiera zincata per bocchetta codd. VNXI80BRD e VNXI100BRD - 1 attacco laterale Ø75/63mm - chiusura anti-malta - 1 tappo
Outer plenum in galvanised steel for design grilles codes VNXI80BRD and VNXI100BRD - 1 side outlet Ø75/63mm - anti-mortar closure - 1 cap

1 1



VNXI125PM/200L

VNXI63PM/140L
Plenum in lamiera zincata per bocchetta codd. VNXI80BRD e VNXI100BRD - 1 attacco posteriore Ø75/63mm - chiusura anti-malta - 1 tappo
Outer plenum in galvanised steel for design grilles codes VNXI80BRD and VNXI100BRD - 1 rear outlet Ø75/63mm - anti-mortar closure - 1 cap

1 1



VNXI125VES/IM

VNXI63PML/200L
Plenum in lamiera zincata per bocchetta codd. VNXI125BRD e VNXI150BRD - 2 attacchi laterali Ø75/63mm - chiusura anti-malta - 2 tappi
Outer plenum in galvanised steel for design grilles codes VNXI125BRD and VNXI150BRD - 2 side outlets Ø75/63mm - anti-mortar closure - 2 caps

1 1



VNXI63ADT

VNXI63PM/200L
Plenum in lamiera zincata per bocchetta codd. VNXI125BRD e VNXI150BRD - 2 attacchi posteriori Ø75/63mm - chiusura anti-malta - 2 tappi
Outer plenum in galvanised steel for design grilles codes VNXI125BRD and VNXI150BRD - 2 rear outlets Ø75/63mm - anti-mortar closure - 2 caps

1 1

VNXI125PM/200L
Plenum in lamiera zincata per bocchetta codd. VNXI125BRD e VNXI150BRD - 1 attacco posteriore Ø125mm - chiusura anti-malta - 1 tappo
Outer plenum in galvanised steel for design grilles codes VNXI125BRD and VNXI150BRD - 1 rear outlet Ø125mm - anti-mortar closure - 1 cap

1 1

VNXI125VES/IM
Valvola di immissione/estrazione in plastica con anello di sicurezza Ø125mm, per adattatore cod. VNXI63ADT
Intake/extract valve in plastic with safety ring Ø125mm for adaptor code VNXI63ADT

10 10

VNXI63ADT
Adattatore ad angolo 90° in lamiera zincata per valvola di immissione/estrazione cod. VNXI125VES/IM e bocchetta design VNXI125BRD - 2 ingressi 75/63mm - 1 uscita 125mm - 2 tappi
90° angled adapter in galvanized sheet for intake/extraction valve code VNXI125VES/IM and design nozzle VNXI125BRD - 2 inputs 75/63mm - 1 input 125mm - 2 caps

1 1



Per la disponibilità contattare la rete commerciale
For availability please contact sales dept.



Disponibilità fino ad esaurimento scorte
Available until stock out